

# Upper Ground Floor Space Plan

3,100 sq ft (288 sq m)

Workstations (fixed)	34
Workstations (flex)	12
Boardroom (8 person)	01
Meeting room (3 person)	01
Meeting room (4 person)	01
Kitchen	01



- Office
- Reception
- Let Office
- Core

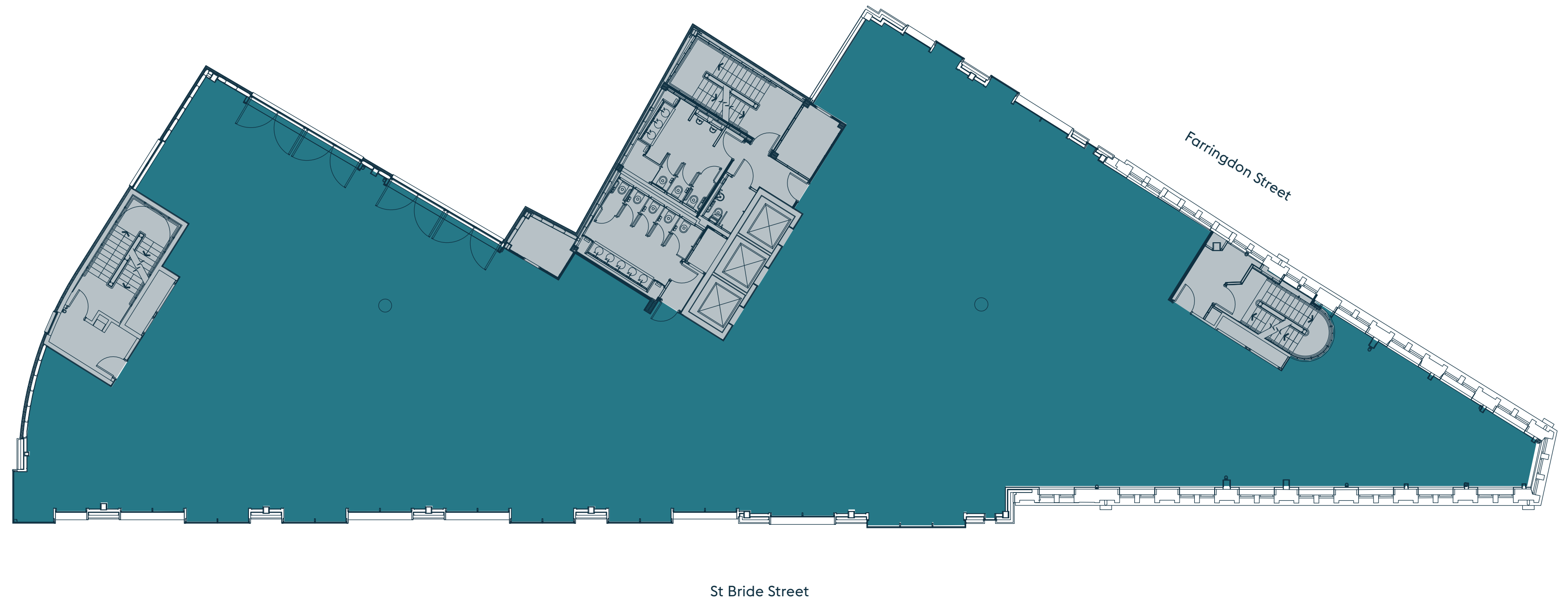
Plans not to scale.  
For indicative purposes only.

# Third Floor

9,365 sq ft (870 sq m)



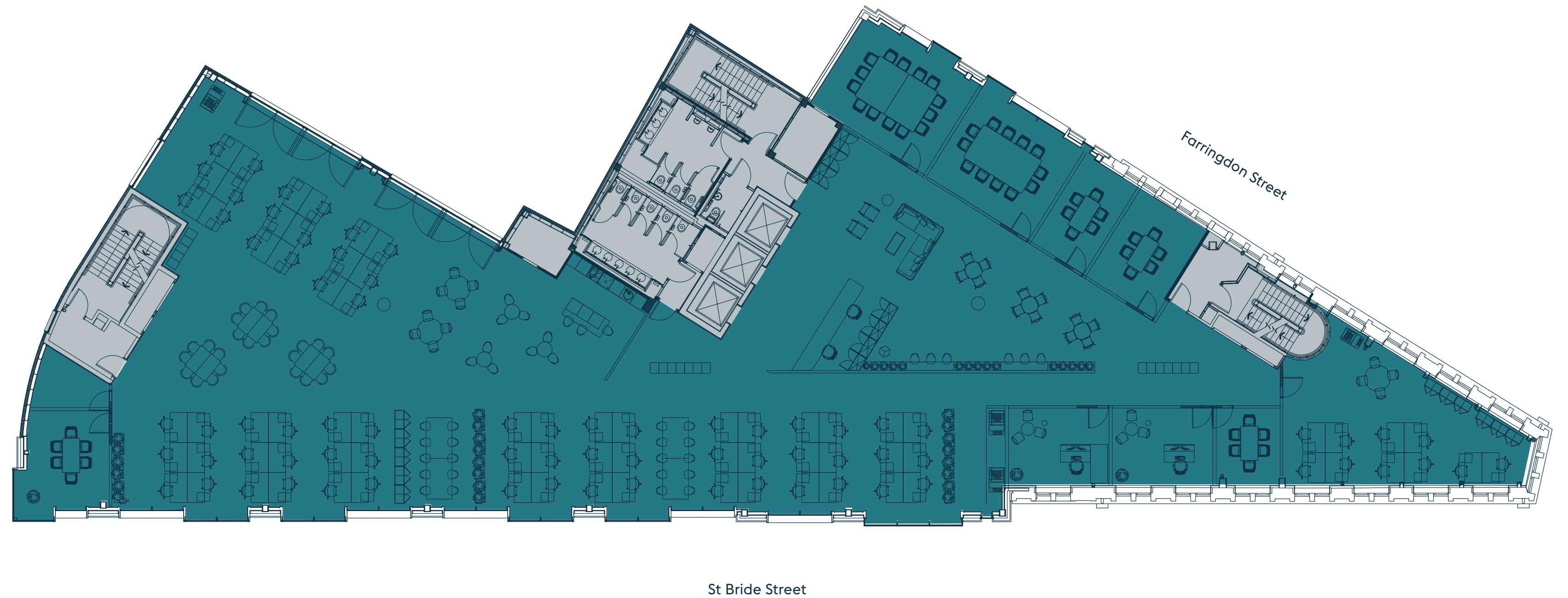
- Office
- Core



# Third Floor Indicative Space Plan

9,365 sq ft (870 sq m)

Workstations	76
Hot Desks	20
Executive Offices	02
6 Person Meeting Rooms	04
12 Person Meeting Rooms	01
14 Person Meeting Rooms	01
Breakout Areas	03
Reception	01
Kitchen	01



Office  
Core

# Fourth Floor

8,288 sq ft (770 sq m)



- Office
- Terrace
- Core



# Fourth Floor Indicative Space Plan

8,288 sq ft (770 sq m)

Workstations	77
Hot Desks	32
6 Person Meeting Rooms	02
12 Person Meeting Rooms	01
14 Person Meeting Rooms	01
Breakout Areas	04
Reception	01
Kitchen	01



- Office
- Terrace
- Core

